

# *Woolens basket*



1011 / 9000695673



**Do not operate the woolens basket until you have read these instructions and the instruction manual for the dryer.**

## The woollens basket

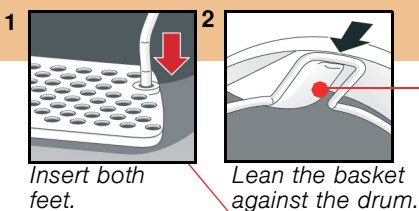
The woollens basket enables you to dry **individual** machine-washable or hand-washable woollen fabrics, plastic or artificial leather sports shoes and soft toys. The woollens basket does not turn with the drum as it spins. This means that woollen fabrics, sports shoes or soft toys can be dried. When they are damp, woollen fabrics must move about as little as possible as they tend to become felted. Due to their weight, sports shoes may cause damage to the drum. Due to their weight and size, soft toys may cause damage to the drum.



### Check the basket

Never operate the woollens basket if it is damaged. Inform after-sales service.

### Insert the basket

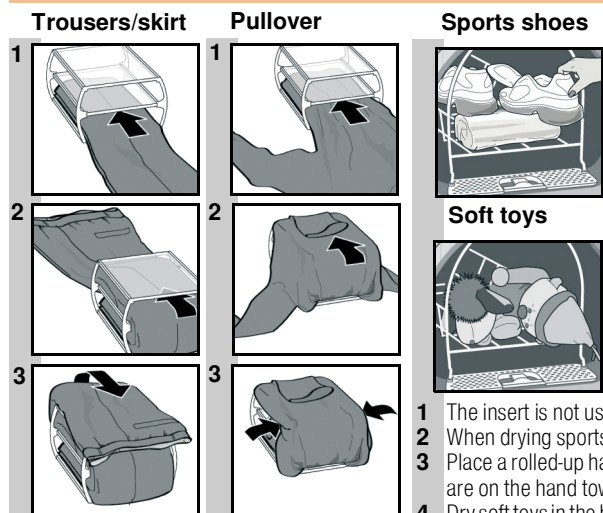


The drum must be empty.

### Application examples



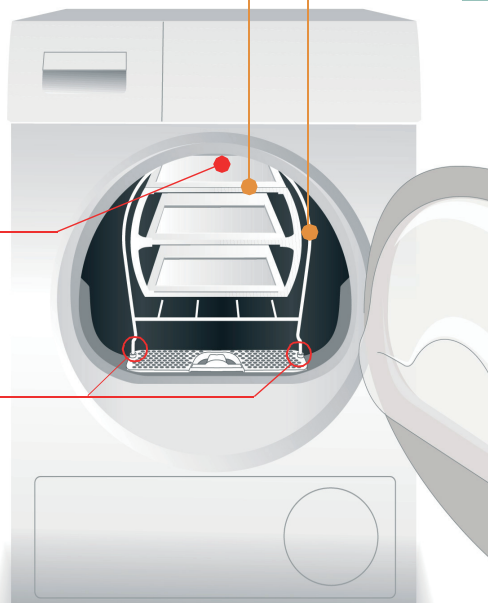
The laundry must have been spun. Place the items of laundry loosely in the basket – do not squash them in.



- 1 The insert is not used for sports shoes.
- 2 When drying sports shoes, pull the tongues a long way out. Remove shoelaces, insoles and/or heel cushions.
- 3 Place a rolled-up hand towel in the basket so that an inclined surface is created. Place the shoes so that the heels are on the hand towel.
- 4 Dry soft toys in the basket without the insert. To ensure that the soft toys do not fall out of the basket, do not exceed the permitted quantity.

## Drying with the woollens basket

Basket for woollens  
Insert



### Switch off the dryer

Press the programme selector ①.



### Remove the laundry

After drying, remove the basket and insert from the dryer. Lay the laundry out flat and air it for approx. 15 minutes.

### After the end of the programme ...

### Start the programme

Select the ►|| Start/Pause button.

### ...Set the drying time

This can be set in 10 minute increments up to 2:30 hrs by selecting the "Change" button or the button for the duration of the programme (*depending on the model*). To achieve the Cupboard dry dryness level, we recommend the following times. For thick or multi-layered items of laundry, there may be residual moisture and they may require further drying.

Thin woollen pullover	1:20 hrs
Thick woollen pullover	1:30 - 3:00 hrs
Skirt	1:00 - 1:30 hrs
Trousers	1:00 - 1:30 hrs
Small items, e.g. gloves	30 mins
Sports shoes (max. 1.5 kg)	1:30 hrs + airing, or max. 2:00 hrs
Soft toys	Depending on the size: 1:30 - 3:30 hrs

### Select the programme for the woollens basket ...

Only use the programme for the woollens basket. Refer to the programme overview in the instruction manual.

### Fit the insert



The laundry must not touch the drum. Otherwise, items of laundry could become trapped or damaged.



Drying